

Davidov Introduction

Ken Lin



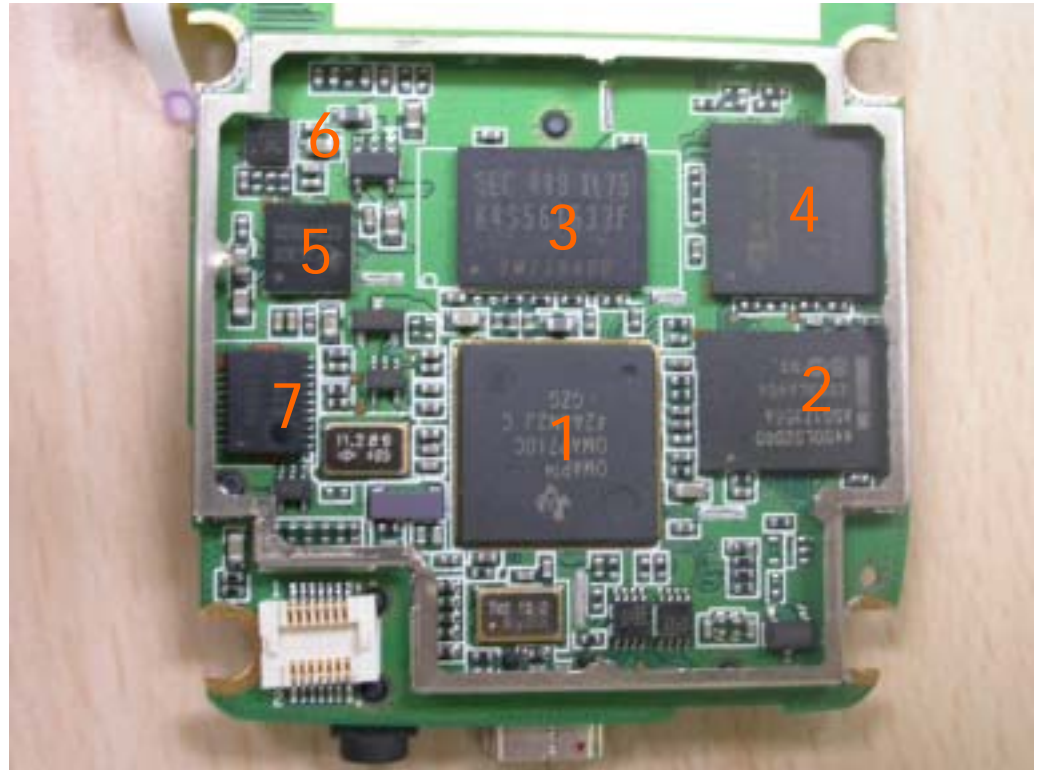


Outline

- Baseband section
 - Overview
 - Block diagram
 - FQC mode
 - OQC mode
- Radio Frequency section
 - Overview
 - Block diagram
 - GSM 900 , 1800 , 1900
 - Tx & Rx path
- Troubleshooting
- Q&A

Overview

1. Perseus (OMAP 710B)
2. Flash memory
3. External SDRAM
4. NVidia GoForce 400
5. Codec
6. Operation Amplifier
7. RTC module



Overview

8. Bluetooth

9. NAUSICA



Top



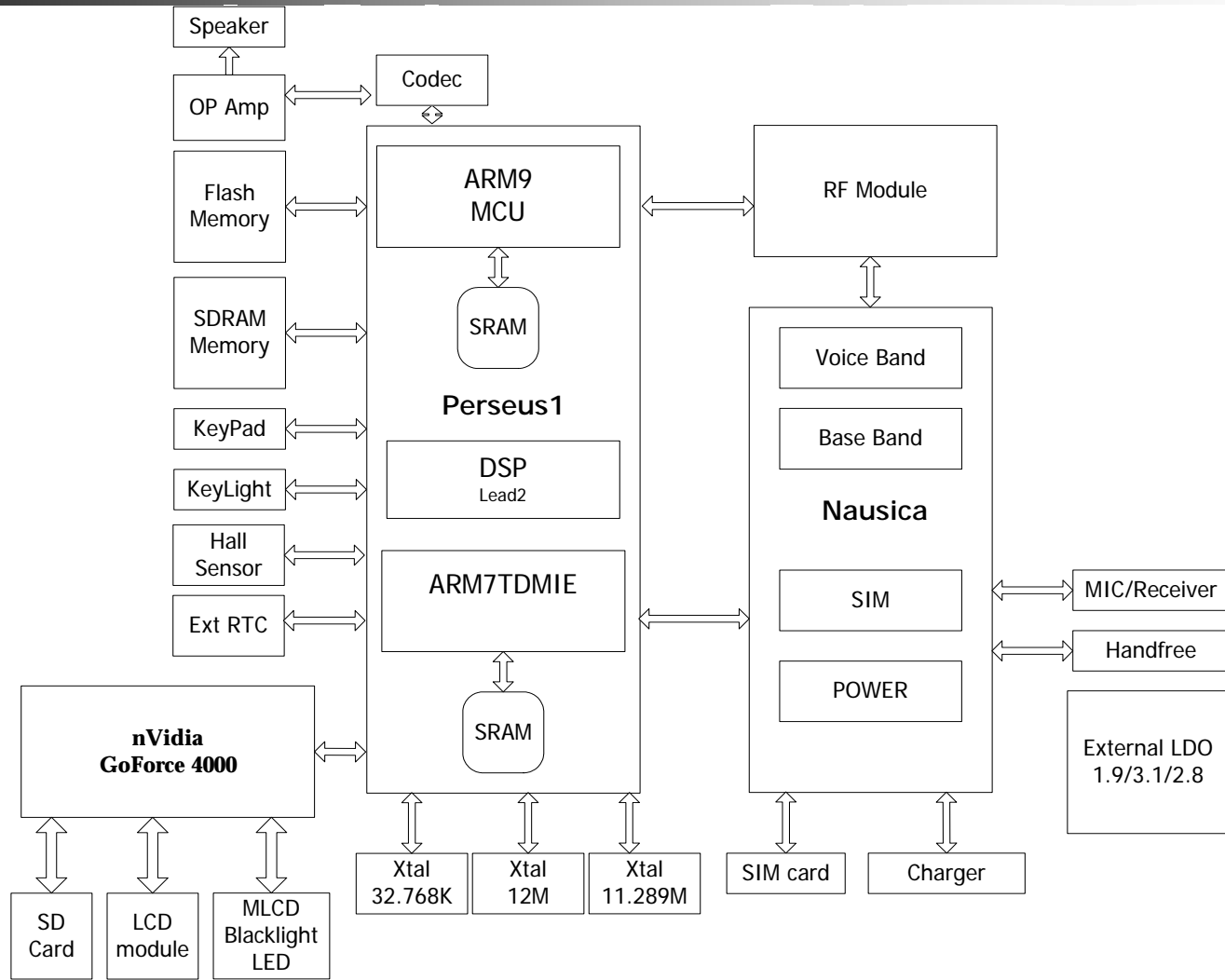
Bottom



Keypad




Block Diagram





FQC mode

- * # * * 372 # + dial
- 0.S/W ver.&mode
- 1.Battery level
- 2.Keypad function
- 3.Indication function
- 4.Audio path
- 5.SD Card test
- 6.Camera test
- 7.IrDA test
- 8.Alarm clock

FQC Mode 

0. S/W ver. & mode


- 1. Battery level
- 2. Keypad function
- 3. Indication function
- 4. Audio path
- 5. SD Card test
- 6. Camera test
- 7. IrDA test
- 8. Alarm clock

Select	Back
--------	------



OQC mode

- 0. Keypad
- 1. Backlight
- 2. LCD
- 3. Vibrator
- 4. Melody
- 5. Audio path
- 6. Audio jack
- 7. Battery info
- 8. SD Card test
- 9. Camera
- 10. IrDA test
- 11. Alarm clock


OQC Mode 

0. Keypad

- 1. Backlight
- 2. LCD
- 3. Vibrator
- 4. Melody
- 5. Audio path
- 6. Audio jack
- 7. Battery info
- 8. SD Card test
- 9. Camera test

Select

Back

OQC Mode 

0. IrDA Test

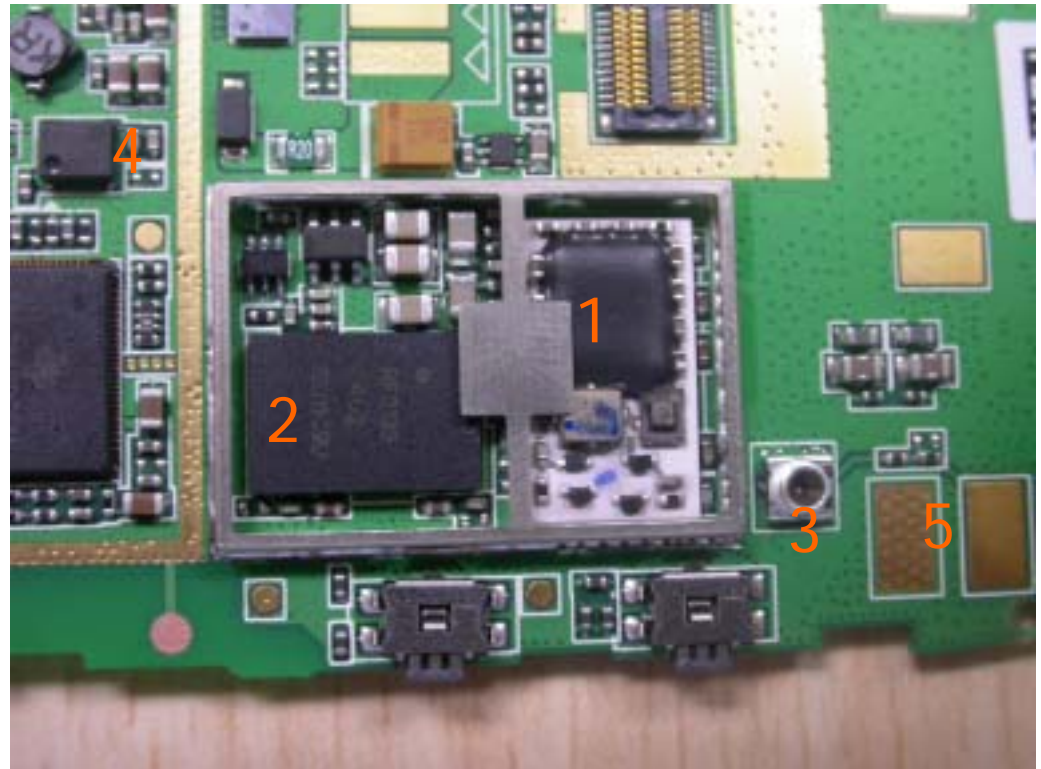
- 1. Alarm clock

Select

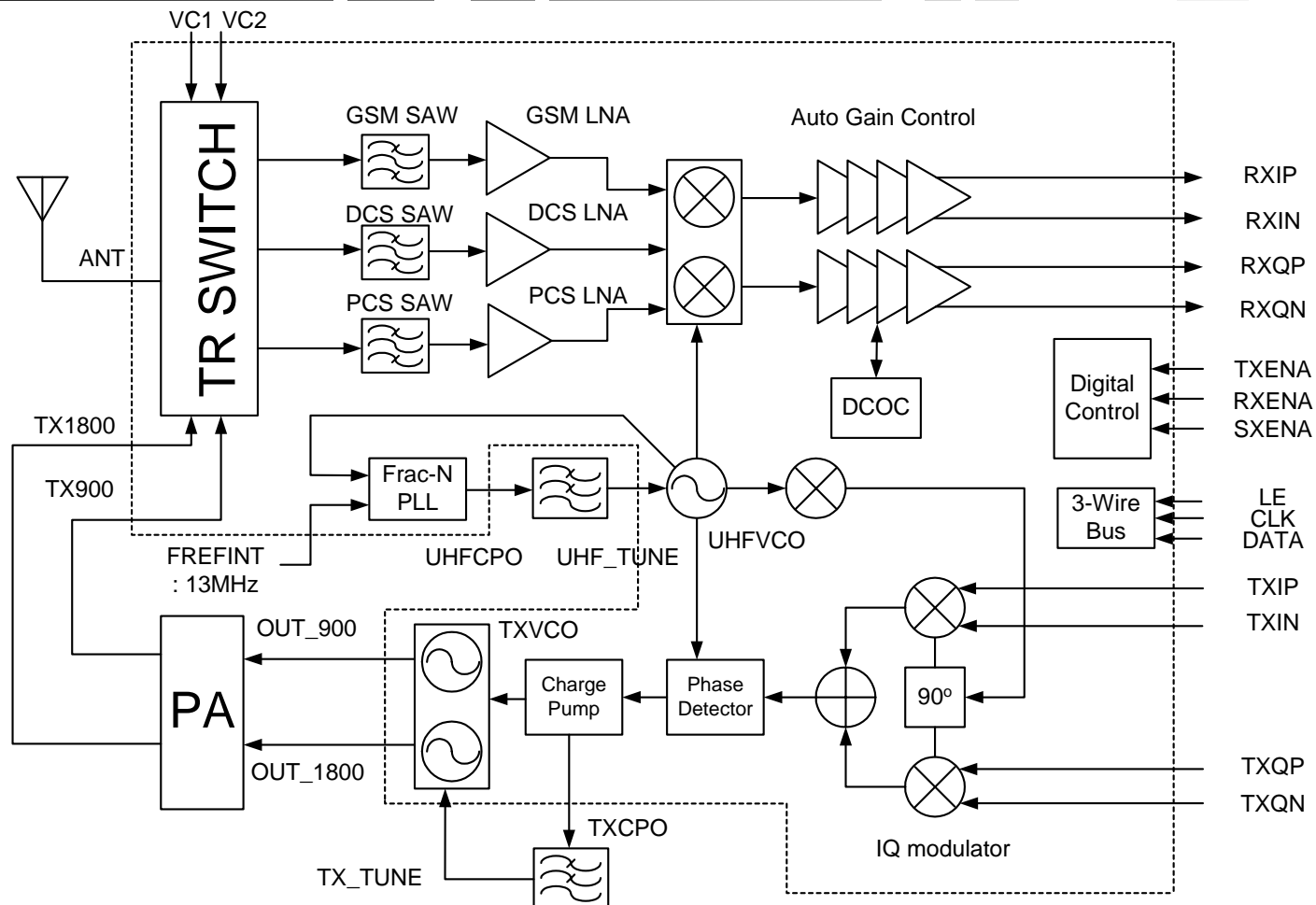
Back

RF Overview

1. Hurricane
2. PA
3. Car kit
4. 26MHz Oscillator
5. Antenna Pad



Block Diagram





GSM 900

- Channel : 975~1023 , 0~124
- Tx : 895MHz~915MHz
- Rx:935MHz~960MHz
- Tx-Rx : 45MHz
- Bandwith : 200 K
- Channel Q'ty :124
- Power Level : 5~19
- Max Power : 2w



GSM1800

- Channel : 512~885
- Tx :1710MHz~1785MHz
- Rx:1805MHz~1880MHz
- Tx-Rx : 95MHz
- Bandwith : 200 K
- Channel Q'ty :374
- Power Level : 0~15
- Max Power : 1w



GSM 1900

- Channel : 512~810
- Tx : 1805MHz~1910MHz
- Rx: 1930MHz~1990MHz
- Tx-Rx : 125MHz
- Bandwidth : 200 K
- Channel Q'ty : 299
- Power Level : 0~15
- Max Power : 1w



Tx and Rx Path

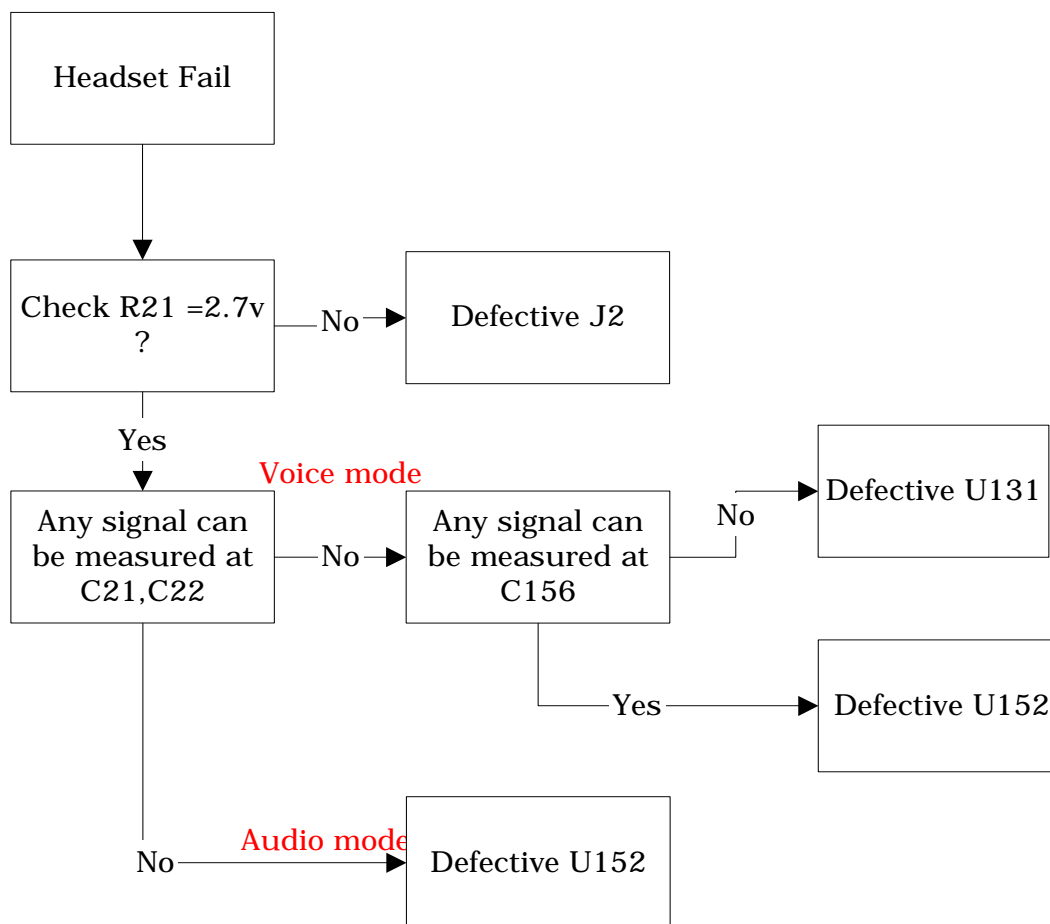
- Tx : Transceiver → PA → T/R switch → Car kit → Antenna
- Rx : Antenna → T/R switch → Saw filter → Transceiver



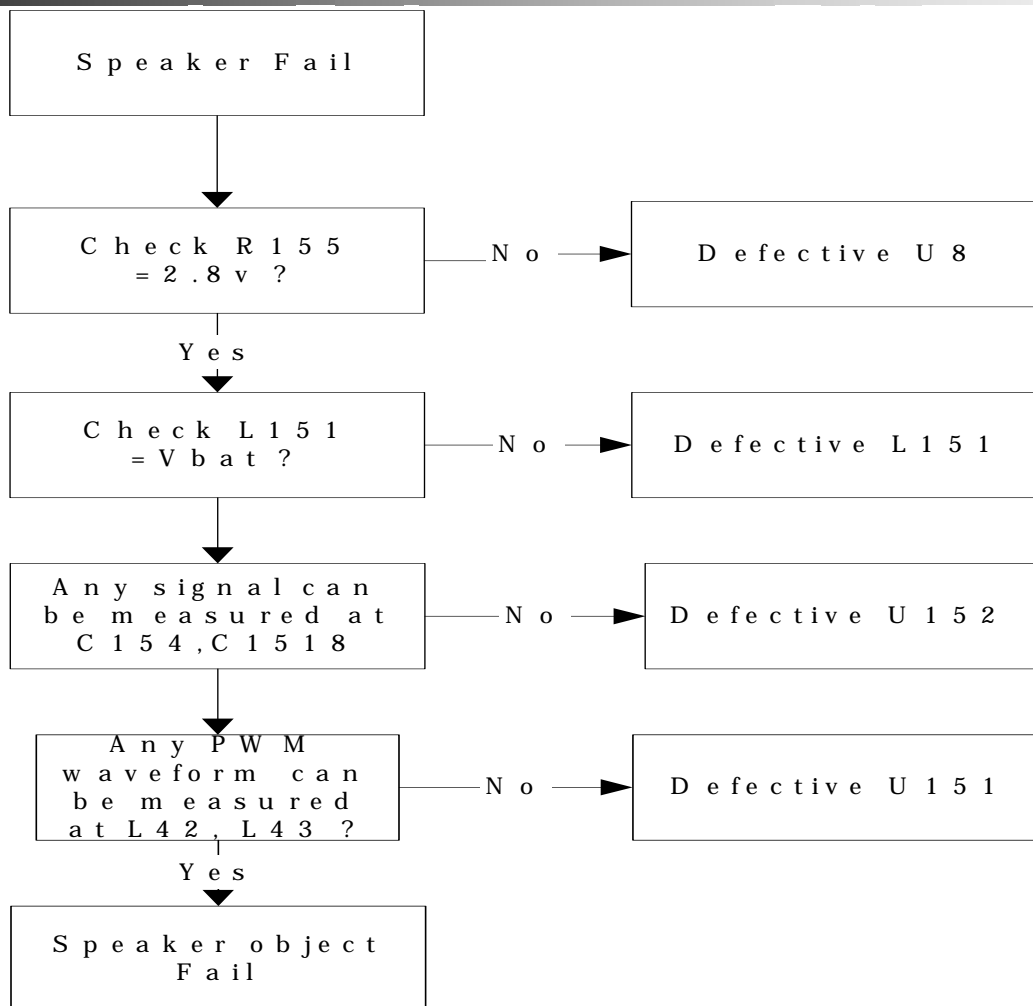
Troubleshooting

- Headset Fail
- Speaker Fail
- Receiver Fail
- Microphone Fail
- LCM Fail
- Charger Fail
- Vibrator is dead

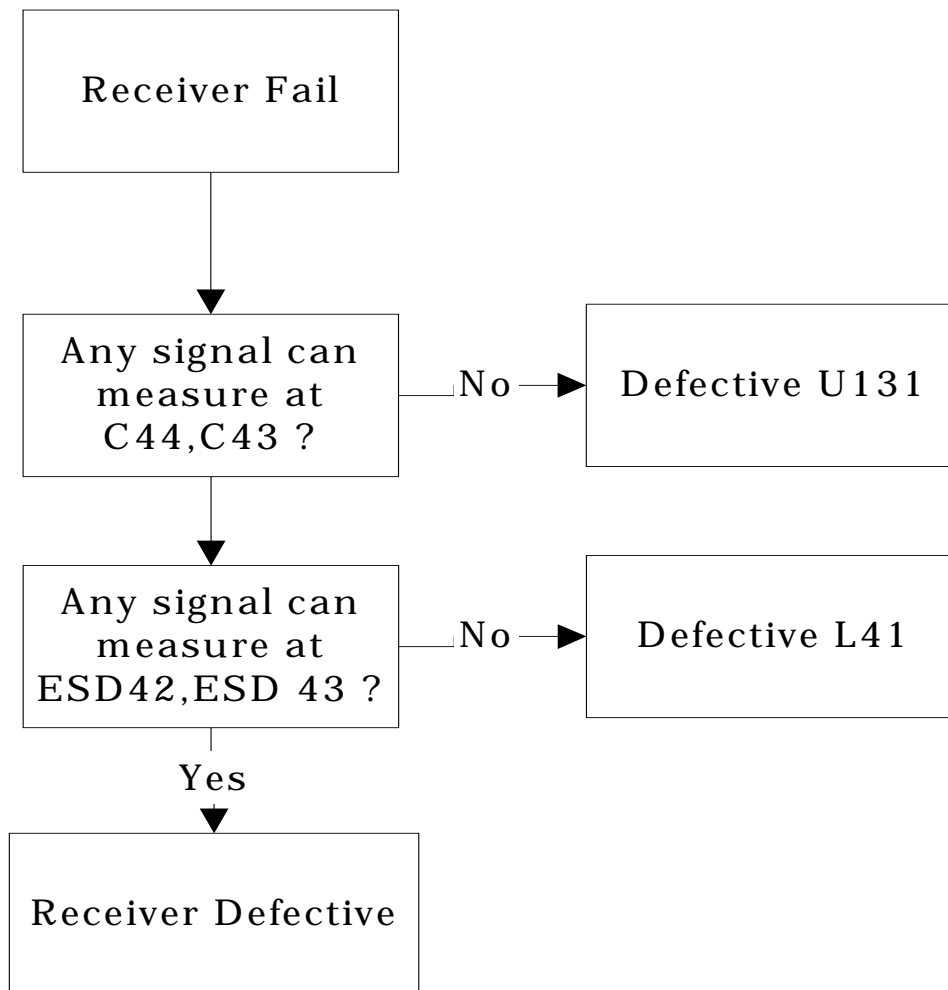
Headset Fail



Speaker Fail

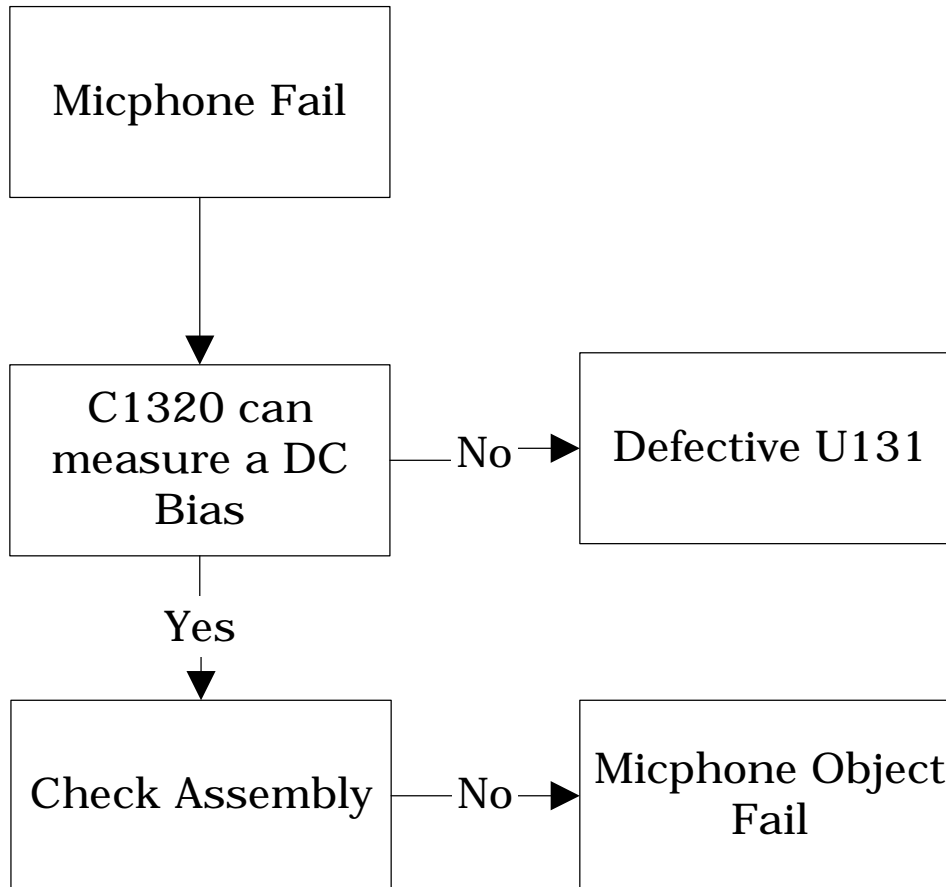


Receiver Fail



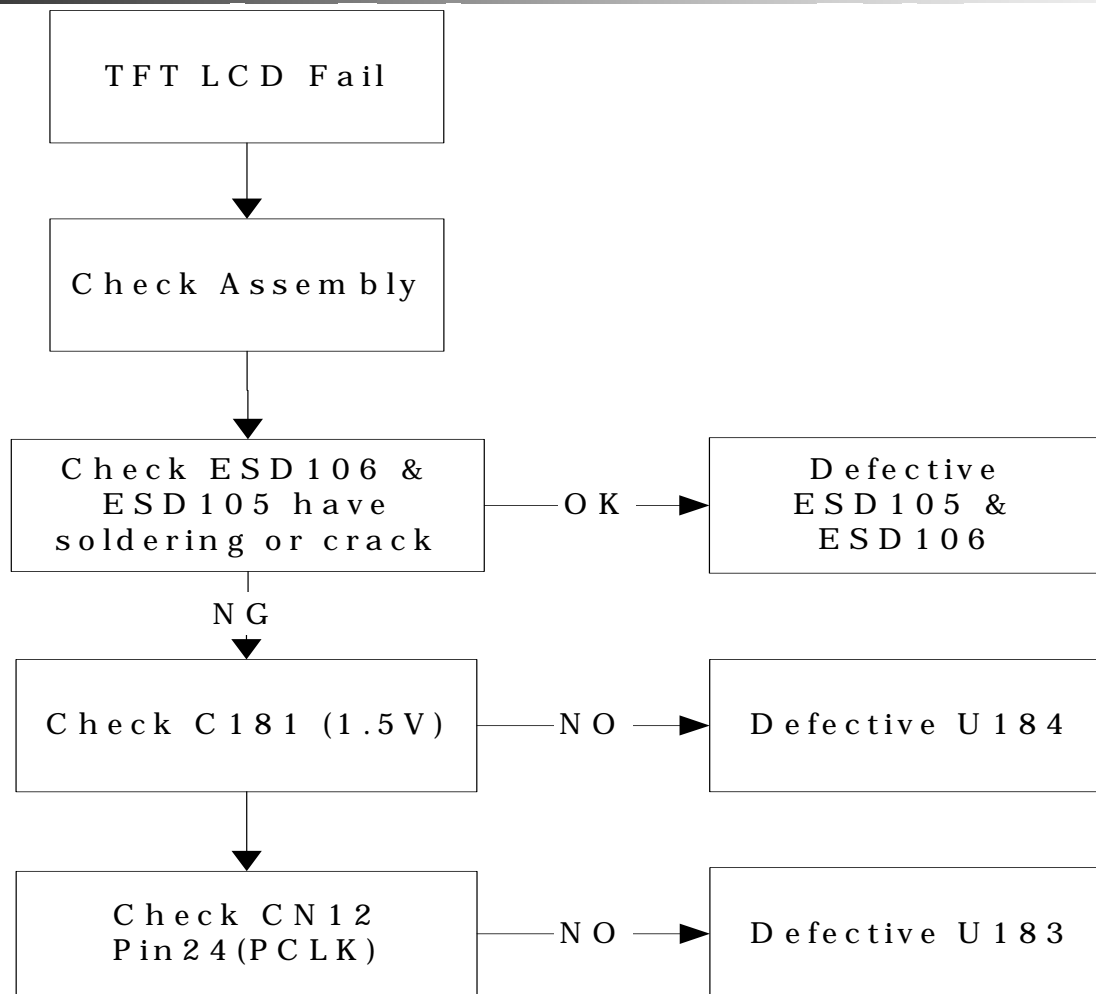


Micophone Fail

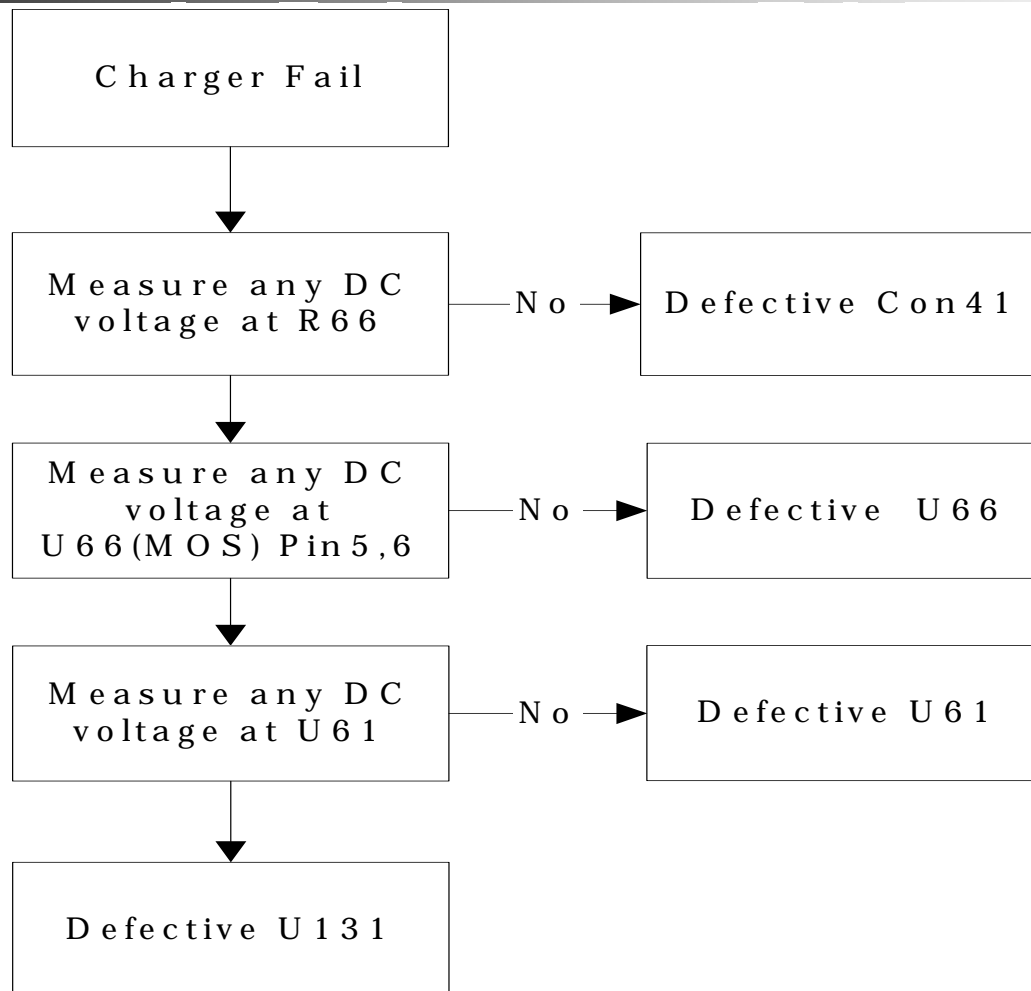




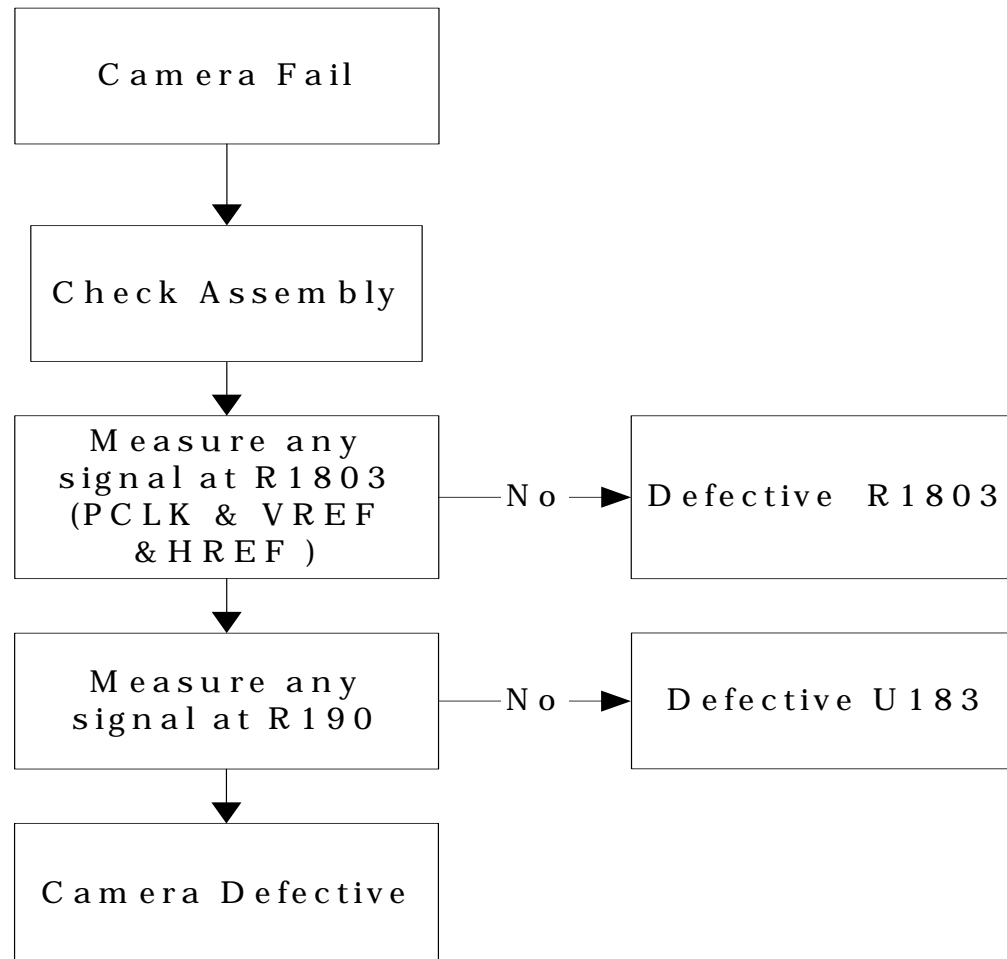
LCM Fail



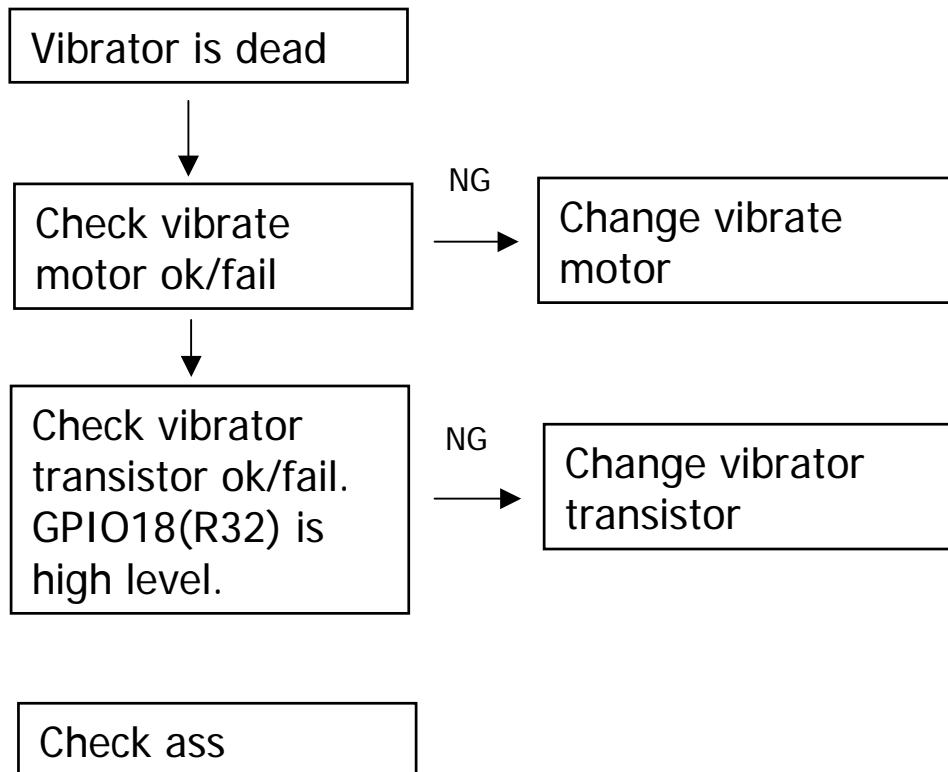
Charger Fail



Camera Fail



Vibrator is dead





Q & A
